

# Opening Doors to Community



*Celebration and Consecration Sunday*  
*October 1, 2000*  
*11:00 AM*

*Community United Methodist Church*  
*20 North Center*  
*Naperville, Illinois*

**WORLD COMMUNION SUNDAY**  
**A SERVICE OF CELEBRATION,**  
**CONSECRATION AND COMMUNION**

**SERVICE OF GATHERING**

**PRELUDE**

Fanfare  
(Psalm 81:1-3)

-John Cook

Sing aloud to God our Strength,  
shout for joy to the God of Jacob!  
Raise a song, sound the tambourine,  
the sweet lyre with the harp.  
Blow the trumpet at the new moon,  
at the full moon, on our feast day.

**INTROIT**

Holy, Holy Holy  
-The Sanctuary Choir-

-Schubert

**\*PROCESSIONAL HYMN 577**

God of Grace and God of Glory

*CWM Rhondda*

**\*PRAYER OF INVOCATION**

**WORDS OF WELCOME AND INTRODUCTION**

**SERVICE OF THE WORD**

**PRAYER FOR ILLUMINATION**

Open wide the window of our spirits, O Lord, and fill us full of light; open wide the door of our hearts, that we may receive and entertain thee with all our powers of adoration and love. Amen.

**THE FIRST LESSON**

James 5:13-20

Pew Bible, NT p. 231

Leader: The word of our Lord.

People: Thanks be to God!



## SERVICE OF THE TABLE

### PRAYERS OF THE PEOPLE

#### THE INVITATION

**\*THE PEACE** (Let us offer one another signs of God's reconciliation and love with the words, "The Peace of Christ be with you." "And also with you.")

#### RECEIVING OF OUR TITHES AND OFFERINGS

##### AND WORLD COMMUNION SUNDAY OFFERING

**for Crusade and Ethnic Minority Scholarships for the training of a new generation of leaders in the global church.**

#### Offertory

Tandi Tanga Jesus

Traditional African Tune

arr. Bradley Ellingboe

-The Sanctuary Choir and Rejoice Dancers; Donna Pries, director-

*translation: I am thanking Jesus. Traditional Namibian and Tanzanian texts.*

#### \*Doxology

**Praise God, from whom all blessings flow;**

*Lasst uns erfreuen*

**praise God, all creatures here below:**

**Alleluia! Alleluia!**

**Praise God, the source of all our gifts!**

**Praise Jesus Christ, whose power uplifts!**

**Praise the Spirit, Holy Spirit!**

**Alleluia! Alleluia! Alleluia!**

### A SERVICE OF WORD AND TABLE

#### TAKING THE BREAD AND CUP

(The children from our Kindergarten and First Grade Sunday School Class bring loaves of bread from various cultures to represent the diversity of the Body of Christ gathered at the Table on this World Communion Sunday)

#### THE GREAT THANKSGIVING

The Lord be with you.

**And also with you.**

Lift up your hearts.

**We lift them up to the Lord.**

Let us give thanks to the Lord our God.

**It is right to give our thanks and praise.**

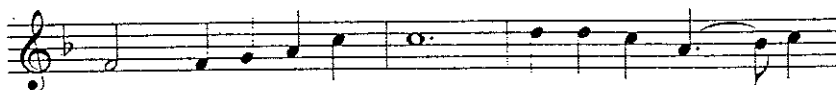
(The Bishop gives thanks remembering God's acts of salvation.)

And so, with your people on earth and all the company of heaven we praise your name and join their unending hymn:

## SANCTUS



Ho - ly, ho - ly, ho - ly Lord,



God of pow-er and might, heav-en and earth are



full of your glo - ry. Ho - san - na in the



high - est. Bless - ed is he who comes



in the name of the Lord. Ho -



san - na in the high - est, ho -



san - na in the high - est.

Music: *Land of Rest*, adapt. by Marcia Pruner, © 1980, Church Pension Fund  
Acc. by Richard Proulx, © 1986, GIA Publications, Inc. All rights reserved.

*(The Bishop continues the thanksgiving, recalling the institution of the Lord's Supper.)*

And so, in remembrance of these your mighty acts in Jesus Christ, we offer ourselves in praise and thanksgiving as a holy and living sacrifice, in union with Christ's offering for us, as we proclaim the mystery of faith.

### MEMORIAL ACCLAMATION I

Christ has died, Christ is ris - en,  
Christ will come a - gain.

The musical notation consists of two staves in 6/8 time. The first staff contains the melody for "Christ has died, Christ is ris - en," with a long note for "ris - en" and a fermata. The second staff contains the melody for "Christ will come a - gain," with a long note for "a - gain" and a fermata.

Music: *Land of Rest*, adapt. by Richard Proulx, © 1986, GIA Publications, Inc.  
All rights reserved.

*(The Bishop invokes the present work of the Holy Spirit.)*

Through your Son Jesus Christ, with the Holy Spirit in your holy Church, all honor and glory is yours, almighty God, now and for ever.

### GREAT AMEN

A - men, a - men,  
a - men.

The musical notation consists of two staves in 6/8 time. The first staff contains the melody for "A - men, a - men," with a long note for "men," and a fermata. The second staff contains the melody for "a - men," with a long note for "men" and a fermata.

Music: *Land of Rest*, adapt. by Richard Proulx, © 1986, GIA Publications, Inc.  
All rights reserved.

**THE LORD'S PRAYER (using "sins")  
BREAKING THE BREAD  
GIVING OF THE BREAD AND CUP**

**COMMUNION MUSIC**

Come to the Table  
-The Sanctuary Choir-

-Allen Pote

**PRAYER AFTER RECEIVING**

**\*CHORUS OF PRAISE**

For thy church, that evermore lifteth holy hands above,  
offering upon every shore her pure sacrifice of love;  
Christ, our God, to thee we raise this our sacrifice of praise.

For thyself, best Gift Divine, to the world so freely given,  
for that great, great love of thine, peace on earth, and joy in heaven:  
Christ, our God, to thee we raise this our sacrifice of praise.

*Dix*

**\*BENEDICTION**

**\*CHORAL BENEDICTION**

Seven-fold Amen

-Lutkin

*(With the congregation all holding hands.)*

**\*POSTLUDE**

Praise God from Whom All Blessings Flow

-M. Burkhardt

The flowers on the altar are given by Don and Carolyn Lutyens in celebration of their thirty-fifth wedding anniversary.

Cover design and layout by Lauralyn Theodore

## GREETING FROM THE PASTOR

**A**fter years of wishing for an elevator in our building, the intention to actually build it sprang out of our Visioning Conference in 1995. The study and planning for this project were done in 1997-98. A successful capital fund appeal was conducted in the fall of 1998. Final plans were approved in the summer of 1999 and construction was begun December 13, 1999. The project is finally nearing completion now ten months later.

This considerable investment of energy and resources has produced so much more than just an "elevator project." Under the banner, "Opening Doors to Community," we embarked on a bold venture to make our church building more inviting and accessible and our ministry more welcoming and inclusive. The "opening doors" logo has served as a powerful image for all areas of our ministry as we have entered this new century.

I am grateful for the excellent leadership Wayne Rhodes and the Building Committee have given to this building project. I am grateful for the wonderful working relationship we have enjoyed between our Building Committee; the Architect, Tom Jaeger; and the General Contractor, Dan Rekstad. I am grateful for the enthusiastic support and generous commitment of all our members.

Finally, I am grateful to God for the renewal of spirit that has joined this renovation of facilities. Today we truly enter these doors with thanksgiving and praise. For the Lord is good.

Amen!



Thomas E. Babler  
Senior Pastor



## **The Project Team**

Tom Jaeger, Architect  
Jaeger, Nickola and Associates  
Park Ridge  
Architects

Daniel S. Rekstad, President  
Rekstad Builders, Inc.  
Downers Grove  
General Contractors

Marty Brotschul, Project Superintendent  
Rekstad Builders, Inc.

Deborah E. Patrick, Vice-President  
Harris Bank, Naperville

Bill Brestal, Attorney  
Kathleen C. West, Attorney  
Dommermuth, Brestal, Cobine & West, Ltd.  
Naperville

Rev. Donald Schultz  
Capital Fund Consultant  
The James Company  
Madison, Wisconsin

Rev. Royal Speidel, Chairperson  
Aurora District Board of Church Location and Building

*Acknowledgements:*

**The Accessibility Study Task Force**

*Wayne Rhodes, Chairperson*

Bill Valiant	Rich Kaffka	Tom Wilkinson
Don Lutyens	Bill Abernethy	Charlie O'Neill
Sally Chipman	Jo Lynch	Jim Rainwaters
Tom Babler	Bob Schroeder	

**Building Committee**

*Wayne Rhodes, Chairperson*

Pat Becker	Jo Lynch	Al Hollingsworth
Dianne Branch	Jan Mahlstedt	Elmer Schirmer
Amy Hollander	Tom McCauley	Nancy Schroeder
Rich Kaffka	Charlie O'Neill	Ron Van Buskirk
Bob Hillenbrand		

**The Project Finance Sub-Committee**

*Brenda DeGeer, Finance Committee Chairperson*

Elmer Schirmer	Wayne Rhodes
Bill Valiant	Tom Babler

**The Interior Design Sib-Committee**

*Jo Lynch, Chairperson*

Kelly Hudson	Judy Burton
Jan Mahlstedt	Charlie O'Neill

**The Chapel Sub-Committee**

*Jo Lynch, Chairperson*

Christina Stanton, Worship Committee Chairperson  
Jeannine Schmidt, Memorial Committee Chairperson  
Rich Kaffka  
Jane Eesley  
Tom Babler

**The Construction Sub-Committee**

Charlie O'Neill  
Rich Kaffka  
Elmer Schirmer

*The scope of the accessibility and renovation project*

- installation of an elevator to serve all three floors of the building
- improvement of the Center Street doorway to better serve as an attractive and accessible main entrance
- construction of new and accessible men's and women's restrooms on all three floors
- relocation of the Chapel to a larger, more attractive and multi-use space on the second floor
- renovation and redecoration of hallways and classrooms in the education unit
- electrical, ventilation and air conditioning improvements in the education unit
- installation of a sprinkling system in the renovated areas of the building

*The financing of the project*

\$1.5 million	The total cost of the project
\$1 million	Total amount pledged by the congregation (1999-2001)
\$700,000	Construction financing loaned by Harris Bank
\$480,000	Anticipated indebtedness December 31, 2001 (at the end of the three year pledge period)
\$42,000	Amount from our Accessibility Fund pledged for the The Northern Illinois Conference "Operation Commitment" to new church development

## Special Gifts and Donors

Chapel Decorative Glass Doors - In memory of - Chester and Frieda Reinhart

Communion Table - In memory of - Irwin O. Nejd

Chapel Hymnal Rack - In memory of Jane Karpin

Three Candlelighters - In memory of Alyce Duke

Piano - In memory of -     John Cree  
                                      Ethel Eggestein  
                                      Robert Rist  
                                      Gertrude Fagan  
                                      Wilma Dusenbury  
                                      JoAnne Roberts  
                                      Adelyne Mueller  
                                      John Dahlberg

Church Sign - contributions made  
In memory of -             Ron Van Marter  
                                      George Schindel  
                                      John Dahlberg

Paraments - contributions made  
                                      Ethel Barney

Stoneware Baptismal Pitcher and Bowl  
                                      Mary Jo Davis

Chapel Chairs - In honor - Beth, T. and Bryan Hauser  
                                      Liz and Dick Bradley in honor of  
  their 30th wedding anniversary  
                                      Dean and Marion Davis

Chapel Altar -             Ron and Kay Van Buskirk

Gifts will be formally dedicated with the opening of the new chapel

# Community United Methodist Church

**Bishop C. Joseph Sprague**  
Northern Illinois Conference

**Rev. Deborah Fisher**  
Superintendent of the Aurora District

**Rev. Thomas E. Babler**  
Sr. Pastor

**Rev. Jane S. Eesley**  
Associate Pastor

**Rev. JoAnne Chase**  
Minister of Christian Education

**Mary Jacobs**  
Director of Lay Ministry

**Willard Thömen**  
Director of Music

**Jim Best**  
Youth Director

**Lauralyn Theodore**  
Church Administrator

**Wil Blum**  
Treasurer

**Marianna McCauley**  
Greeter/Secretary

**Kathy Shive**  
Financial and Membership Secretary

**Lorna Jansen**  
Organist

**Lisa Bauer**  
Childcare Coordinator